

Protistor® size 00 aR

1000VAC (IEC)

SEMICONDUCTOR PROTECTION FUSES

SQUARE BODY HIGH-SPEED FUSE-LINKS AC PROTECTION



The 1000V Protistor® fuse-links provide maximum flexibility in equipment design and ultimate protection for small power conversion equipment. These ultra-fast acting aR fuses have been engineered to provide state-of-the-art protection for semiconductors: diodes, thyristors and IGBT devices. They are assembled with die-cut elements embedded in solidified sand, which helps control arcing characteristics for a lower I^2t and high interrupting rating level. All contact surfaces are silver plated and all hardware is non-magnetic. Each fuse-link can be equipped with a low voltage trip-indicator which can operate a field mountable microswitch.

TECHNICAL DATA OVERVIEW

| | |
|------------------------|-----------------|
| Ampere Range (A) | 32 ... 315 A |
| Size per Standard | 00 |
| Speed/Characteristic | aR |
| I.R. AC (IEC) | 100 kA 50 kA |
| Package | 3 |
| Rated voltage AC (IEC) | 1000 V |

FEATURES & BENEFITS

- Very low I^2t for improved semiconductor protection
- Ultra fast acting
- Superior cycling capability
- Compact Size

APPLICATIONS

- Protection of inverters, motor drives, UPS systems and similar 1000V or less equipments

STANDARDS

- EN 60269-4 compliant



Protistor® size 00 aR

1000VAC (IEC)

PRODUCT RANGE

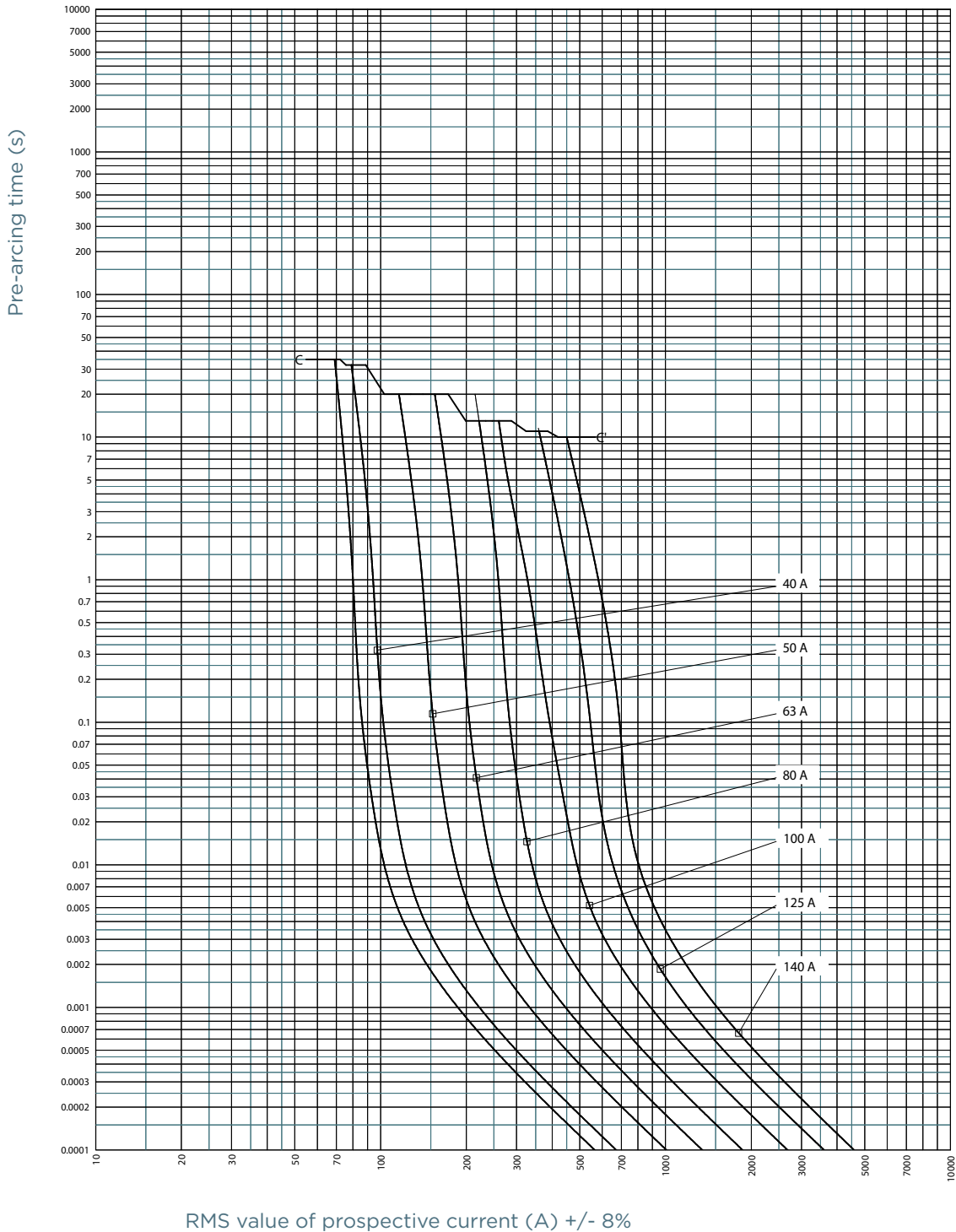
Size 00 DIN80 1000VAC (IEC)

| Catalog number | Item number | Rated voltage AC (IEC) | Rated current I _n | Pre-arcing I ² t | Clearing I ² t at Rated Voltage | Rated breaking capacity AC | Power dissipation at I _n | Weight |
|----------------|-------------|------------------------|------------------------------|-----------------------------|--|----------------------------|-------------------------------------|---------|
| DN00UD10C32L | W227581 | 1000 V | 32 A | 32 A ² s | 230 A ² s | 120 kA | 17 W | 0.22 kg |
| DN00UD10C40L | G076412 | 1000 V | 40 A | 45 A ² s | 320 A ² s | 120 kA | 18.5 W | 0.22 kg |
| DN00UD10C50L | H076413 | 1000 V | 50 A | 102 A ² s | 704 A ² s | 120 kA | 19.5 W | 0.22 kg |
| DN00UD10C63L | J076414 | 1000 V | 63 A | 181 A ² s | 1300 A ² s | 120 kA | 23 W | 0.22 kg |
| DN00UD10C80L | C075534 | 1000 V | 80 A | 347 A ² s | 2420 A ² s | 120 kA | 26.5 W | 0.22 kg |
| DN00UD10C100L | D075535 | 1000 V | 100 A | 725 A ² s | 4800 A ² s | 120 kA | 29 W | 0.22 kg |
| DN00UD10C125L | M076417 | 1000 V | 125 A | 1400 A ² s | 9200 A ² s | 120 kA | 34 W | 0.22 kg |
| DN00UC10C160L | X076426 | 1000 V | 160 A | 2469 A ² s | 17300 A ² s | 120 kA | 39 W | 0.25 kg |
| DN00UC10C200L | Y076427 | 1000 V | 200 A | 4527 A ² s | 31500 A ² s | 120 kA | 49 W | 0.25 kg |
| DN00UC10C250L | Z076428 | 1000 V | 250 A | 8680 A ² s | 60000 A ² s | 120 kA | 56.5 W | 0.25 kg |
| DN00UC10C280L | A076429 | 1000 V | 280 A | 11810 A ² s | 81400 A ² s | 120 kA | 62 W | 0.25 kg |
| DN00UC10C315L | V076263 | 1000 V | 315 A | 15430 A ² s | 115000 A ² s | 50 kA | 67 W | 0.25 kg |

MERSEN reserves the right to change, update or correct, without notice, any information contained in this datasheet.

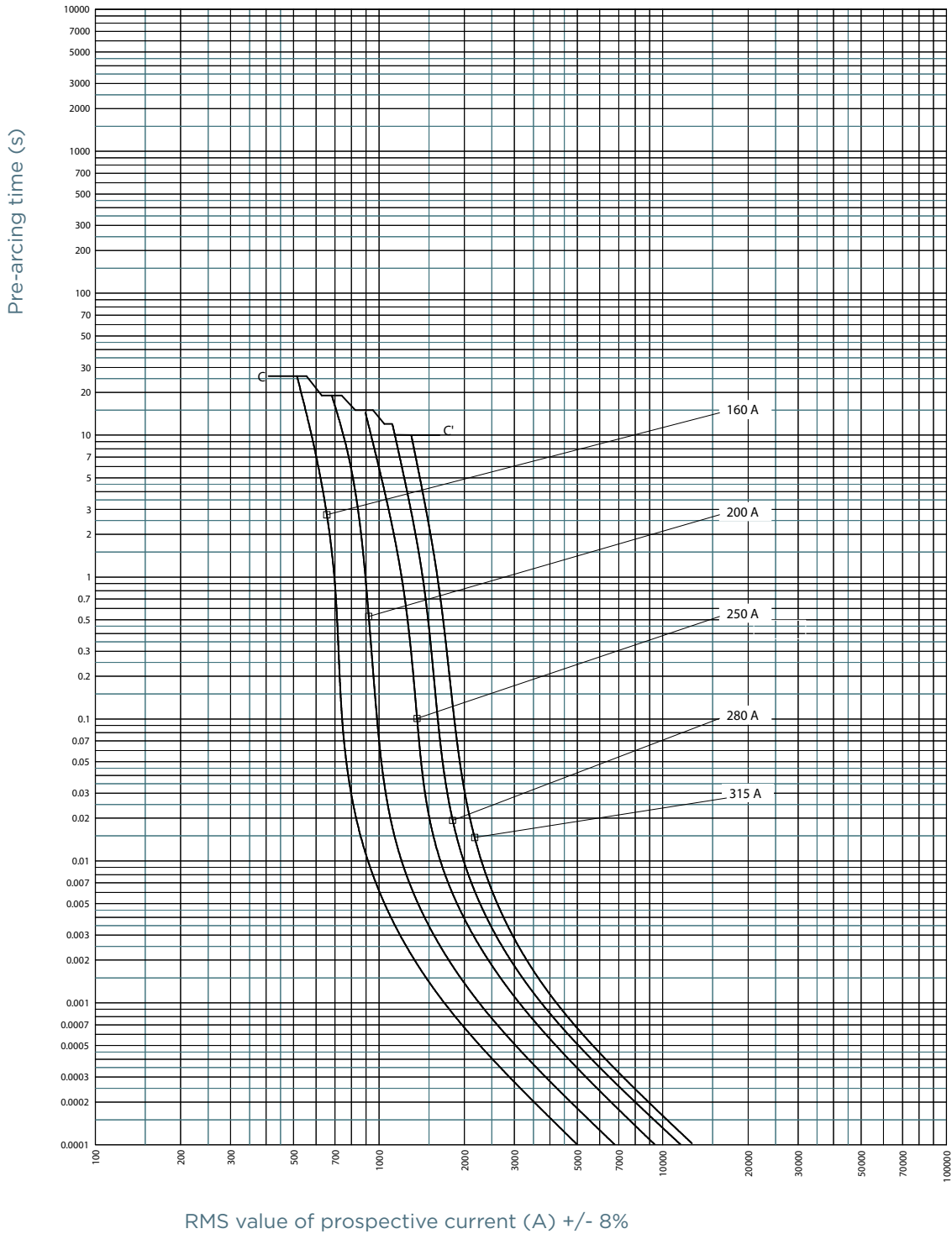
TIME CURRENT CHARACTERISTIC CURVES

Size 00, 1000VAC, 32 to 150A



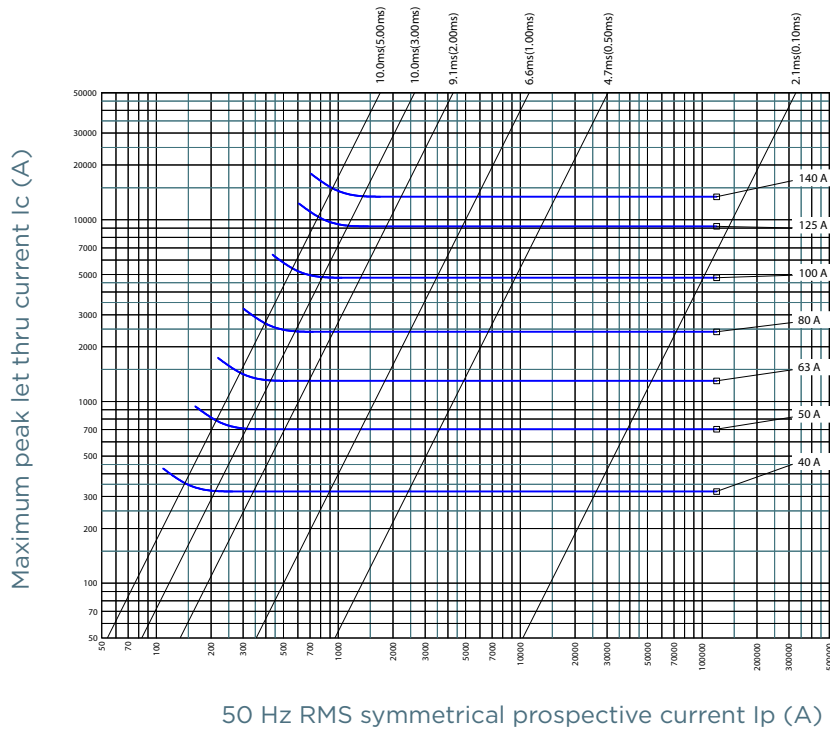
TIME CURRENT CHARACTERISTIC CURVES

Size 00, 1000VAC, 160 to 315A

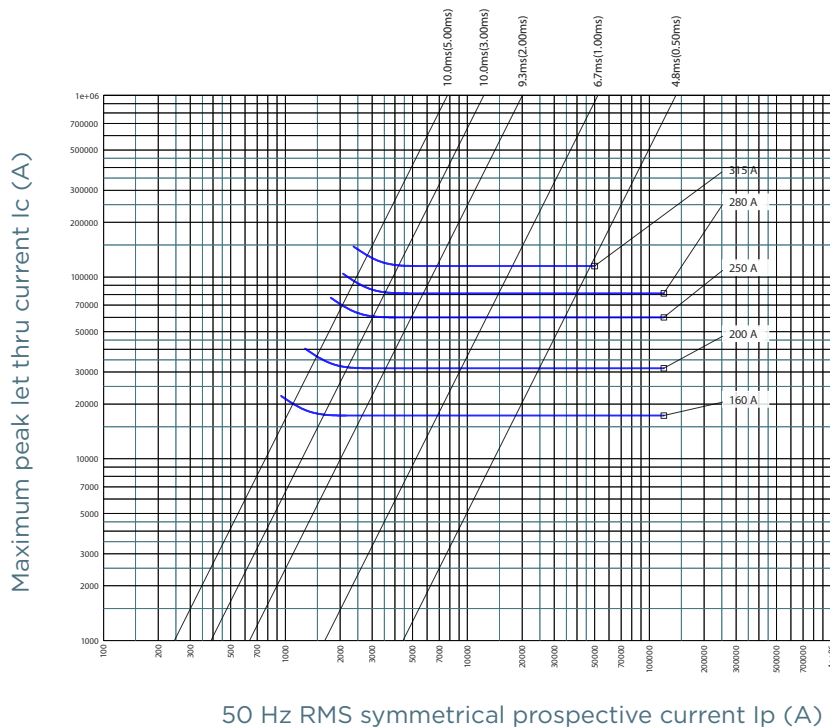


CUT-OFF CURRENT CHARACTERISTIC

Size 00, 1000VAC, 32 to 150A

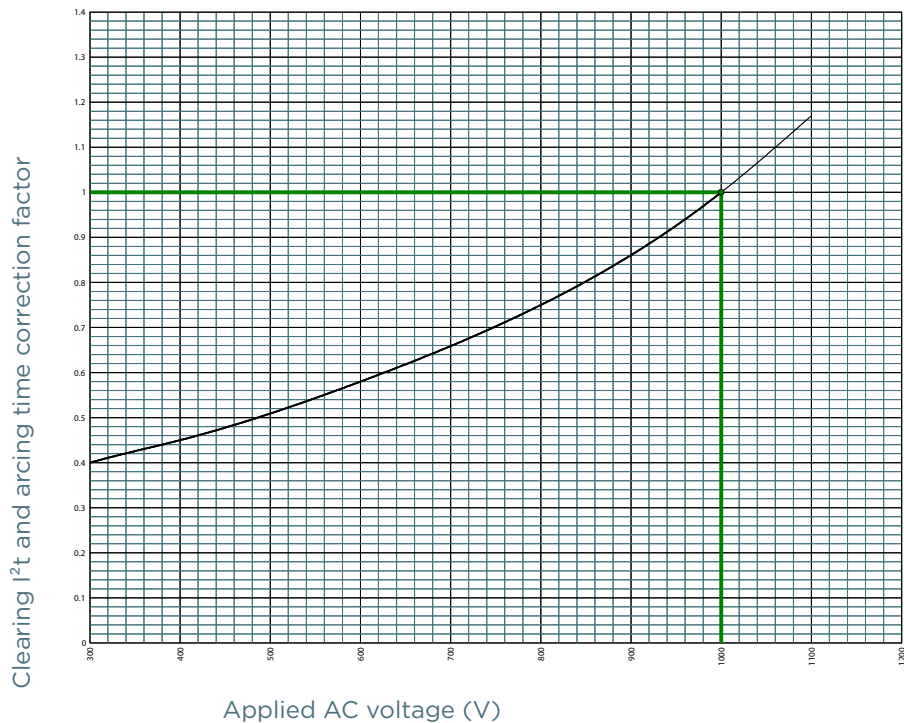


Size 00, 1000VAC, 160 to 315A



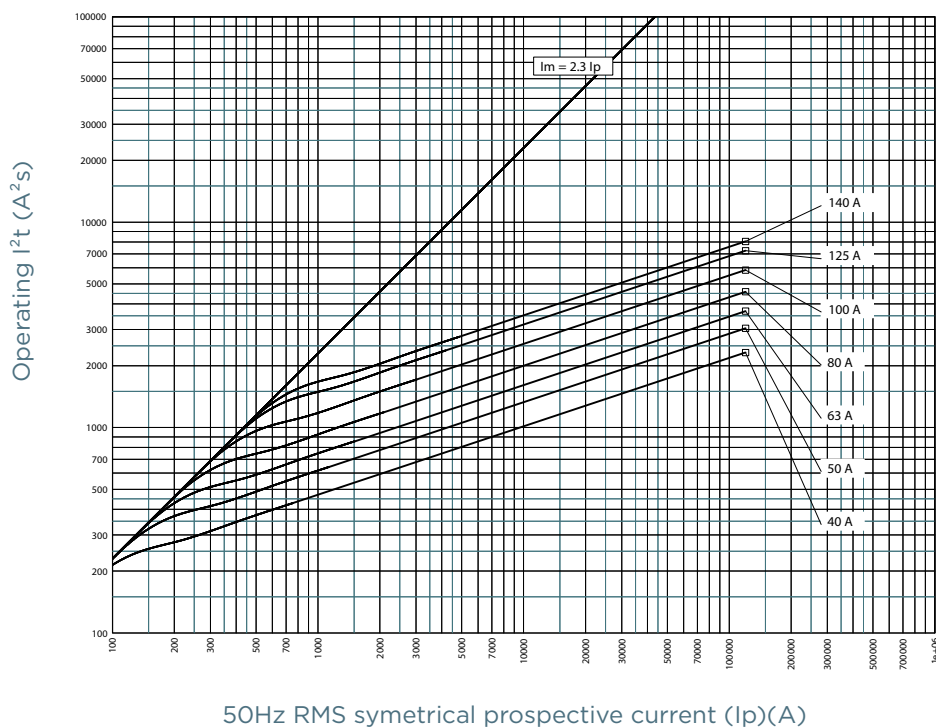
I²T MULTIPLIER COEFFICIENT

Size 00, 1000VAC , 32 to 315A



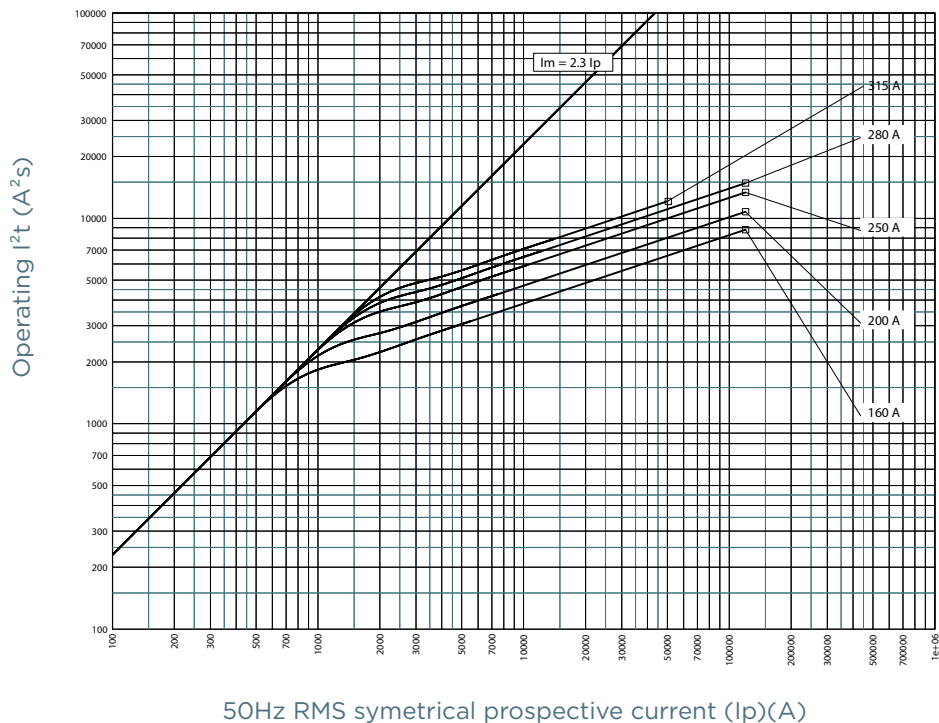
CHARACTERISTICS TOTAL I²T CURVE

Size 00, 1000VAC, 32 to 150A



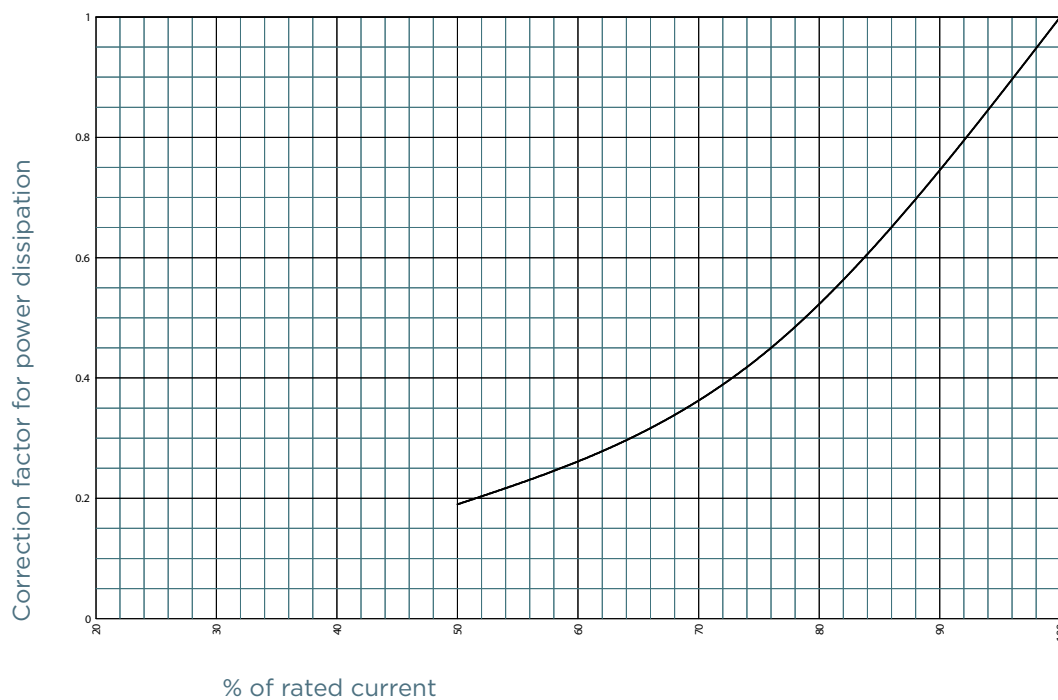
CHARACTERISTICS TOTAL I²T CURVE

Size 00, 1000VAC, 160 to 315A



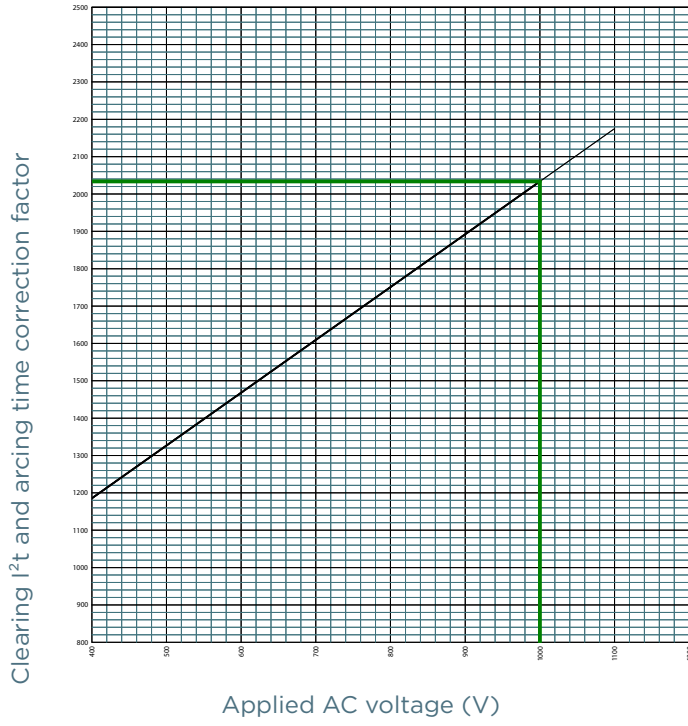
POWER DISSIPATION

Size 00, 1000VAC, 32 to 315A



PEAK ARC VOLTAGE

Size 00, 1000VAC, 32 to 315A

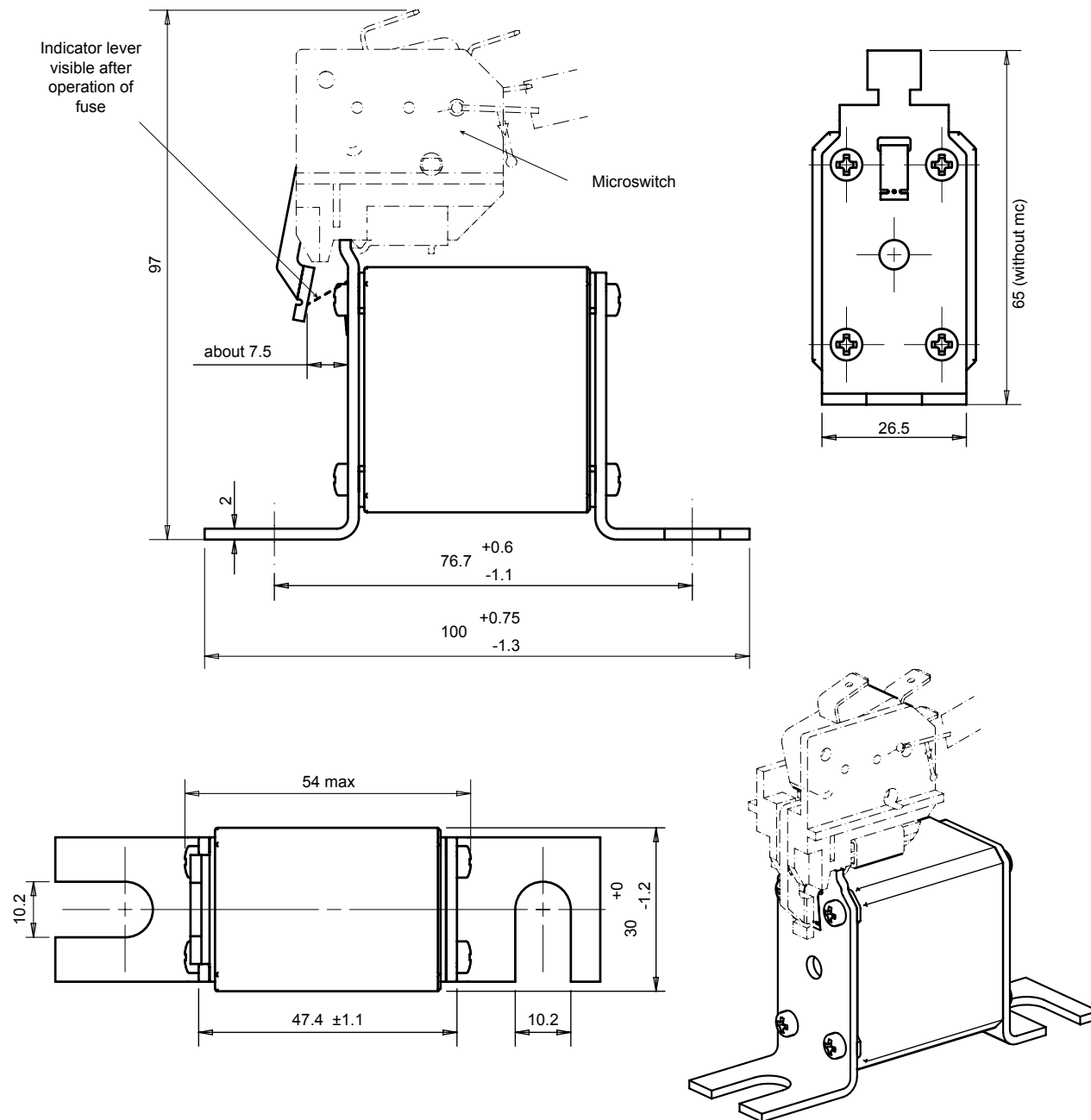


Protistor® size 00 aR

1000VAC (IEC)

DIMENSIONS

Size 00, DIN80, 1000VAC, 32 to 315A



Dimensions in mm

MERSEN reserves the right to change, update or correct, without notice, any information contained in this datasheet.