

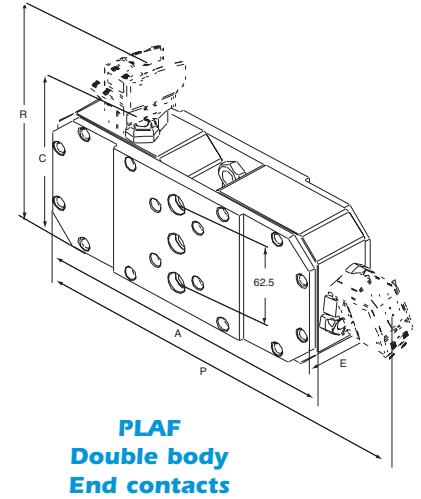


Semiconductor Fuses




PSC - LR range - Size 44

Size	Catalog Number	Weight (g)	Packaging
	7 URD 244 PLAF 2400		
	7 URD 244 PLAF 2700		
	7 URD 244 PLAF 3200		
	7 URD 244 PLAF 3600		
	7 URD 244 PLAF 4000		
	7 URD 244 PLAF 4400		
	7 URD 244 PLAF 4800		
2x44*	6,9 URD 244 PLAF 5000		
double body	6,9 URD 244 PLAF 5600	5300	1
end contacts	6,9 URD 244 PLAF 6000		
	6,9 URD 244 PLAF 6400		
	6 URD 244 PLAF 6600		
	6 URD 244 PLAF 7000		
	6 URD 244 PLAF 7400		
	6 URD 244 PLAF 8000		
	6 URD 244 PLAF 8400		
	5,5 URD 244 PLAF 8500		
	5 URD 244 PLAF 9000		
	5 URD 244 PLAF 10000		

* Press pack available on request



PLAF
Double body
End contacts

Microswitches : MC3E1-5N * - Ref. D310020
 MC3E1-5NBS * - Ref. E310021 Insulation voltage 1250 VAC - DC (data p 21)
 MC3E1-9NBS * - Ref. F310022
 MC3E1-5NET - Ref. L310027

Threaded studs and microswitches ordered separately

Size	A	C ⁽¹⁾	D	E ^{1,7}	d	G ^{0,1} threaded depth	P	R
44 TOF	103 4.06"	118 4.65"	52 2.05"	65 2.56"	M 10	9 0.35"	-	150 5.91"
44 PPASF	103 4.06"	118 4.65"	-	54 2.13"	-	-	-	150 5.91"
244 PLAF	243 9.57"	118 4.65"	-	61 2.40"	M 12	15 0.59"	275 10.82"	150 5.91"

Dimension in mm and inches
 See studs p. 23
 See mounting torque and clamping force information p 23
 (1) Trip indicator extended
 (*) Pending



Semiconductor Fuses

650 - 1250 V
4800 - 800 A

PSC - LR range - 73

Size	Ratings	Voltage	Pre-Arcing	Total Pt @ Un	I @ 10ms	Power losses (W)		Breaking capacities
	(A) In	(V) Un	Pt @ 1ms I ² tp (kA ² s)	(kA ² s)	(A)	0,8In	In	(kA)
	800	1250	170	1155	7500	80	160	110
	900	1250	235	1620	8800	85	170	110
	1000	1200	385	2500	12000	85	170	120
	1050	1200	440	2850	12500	85	170	120
	1100	1150	530	3330	13500	85	170	220
73	1250	1100	630	3650	15000	100	200	240
end contacts	1400	1000	860	4300	17000	110	220	220
	1500	950	1150	5500	20000	115	230	220
	1550	950	1270	6025	21000	120	240	220
	1750	850	1700	7150	24000	125	250	230
	1900	850	2100	9000	27000	140	280	230
	2200	750	2750	10200	31000	148	295	212
	2400	700	3950	13600	37000	153	305	212
	1600	1150	680	4200	8400	165	330	115
	1800	1150	940	5800	11600	170	340	115
	2000	1100	1540	8800	17600	170	340	220
	2100	1100	1760	10100	20200	170	340	220
2x73	2200	1050	2120	11500	23000	170	340	220
press pack	2500	1000	2520	12500	25000	200	400	220
or end contacts	2800	900	3440	15500	31000	220	440	220
	3000	850	4600	19500	39000	230	460	220
	3100	850	5080	21600	43200	240	480	220
	3500	850	6800	28600	57200	250	500	220
	3800	850	8400	36000	72000	280	560	220
	4400	700	11000	37700	75400	295	590	230
	4800	650	15800	50000	100000	305	610	230